

## DIN Nut AISI 304

---

DIN 11851 fittings are for hygienic industries applications. It comprise of a DIN welding male part, a DIN welding liner, a DIN nut and also a seal. The welding Nut are investment precision casting and both long and short type are available.

Standards: DIN 11851

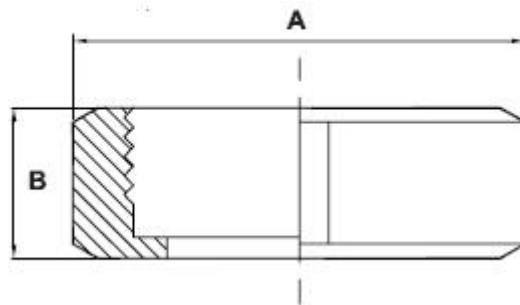
Material: Stainless steel (AISI 304,AISI 304L,AISI 316,AISI 316L)

Size: from DN25 to DN 100

Used in food industry



**DIN 11851 Nut**



**DIN 11851 Nut drawing**

Dimension sheet

DIN(mm)	A	B
25	63	21
40	78	21
50	92	22
65	112	25
75	127	29
100	148	31

Dimension provided are suitable for imperial tube only. For more information about this products, please send us your inquiry.

---

## DIN Nut AISI 304, 316

Contact Us +86-571-28938368 [info@zmcsteel.com](mailto:info@zmcsteel.com)