

## DIN 11851 Welding Liner AISI 316

DIN 11851 fittings are for hygienic industries applications. It comprise of a DIN welding male part, a DIN welding liner, a DIN nut and also a seal. The welding liner are investment precision casting and both long and short type are available.

Standards: DIN 11851

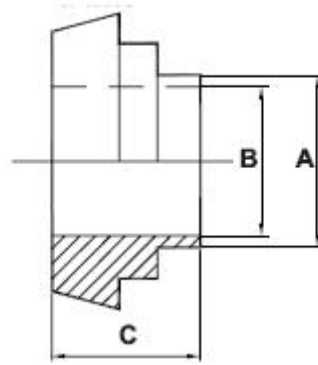
Material: Stainless steel (AISI 304,AISI 304L,AISI 316,AISI 316L)

Size: from DN10 to DN 120

Used in food industry



**DIN 11851 welding Liner**



**DIN 11851 welding Liner**

Dimension sheet

DIN(mm)	A	B	C
25	25.4	22.1	22.0
40	38.1	34.8	26.0
50	50.8	47.5	28.0
65	63.5	60.2	32.0
75	76.2	72.9	37.0
100	101.6	97.4	44.0

Dimension provided are suitable for imperial tube only. For more information about this products, please send us your inquiry.

**DIN 11851 Welding Liner AISI 316L, 316, 304**

Contact Us +86-571-28938368 info@zmcsteel.com