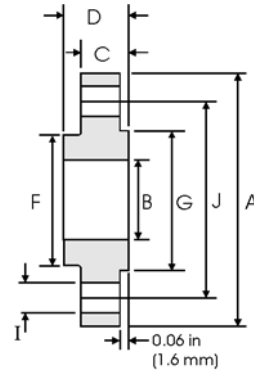




# Slip On Flanges - ANSI B16.5



## Class 150 lb

Pipe		Flange Data				Hub	Raised Face	Drilling Data			Weight
Nominal Pipe Size		<b>A</b>	<b>B</b>	<b>C</b>	<b>D</b>	<b>F</b>	<b>G</b>	<b>H</b>	<b>I</b>	<b>J</b>	
	Outside Diameter	Overall Diameter	Inside Diameter	Flange Thickness min	Overall Length	Hub Diameter	Face Diameter	Number of Holes	Bolt Hole Diameter	Diameter of Circle of Holes	kg/ piece
	in mm	in mm	in mm	in mm	in mm	in mm	in mm		in mm	in mm	
1/2	0.840	3.500	0.880	0.440	0.620	1.190	1.380	4	0.620	2.380	0.39
	21.30	88.90	22.40	11.20	15.70	30.20	35.10		15.70	60.45	
3/4	1.050	3.880	1.090	0.500	0.620	1.500	1.690	4	0.620	2.750	0.56
	26.70	98.60	27.70	12.70	15.70	38.10	42.90		15.70	69.85	
1	1.315	4.250	1.360	0.560	0.690	1.940	2.000	4	0.620	3.120	0.78
	33.40	108.0	34.50	14.20	17.50	49.30	50.80		15.70	79.25	
1 1/4	1.660	4.620	1.700	0.620	0.810	2.310	2.500	4	0.620	3.500	1.03
	42.20	117.3	43.20	15.70	20.60	58.70	63.50		15.70	88.90	
1 1/2	1.900	5.000	1.950	0.690	0.880	2.560	2.880	4	0.620	3.880	1.32
	48.30	127.0	49.50	17.50	22.40	65.00	73.15		15.70	98.60	
2	2.375	6.000	2.440	0.750	1.000	3.060	3.620	4	0.750	4.750	2.06
	60.30	152.4	62.00	19.10	25.40	77.70	91.90		19.10	120.7	
2 1/2	2.875	7.000	2.940	0.880	1.120	3.560	4.120	4	0.750	5.500	3.28
	73.00	177.8	74.70	22.40	28.40	90.40	104.6		19.10	139.7	
3	3.500	7.500	3.570	0.940	1.190	4.250	5.000	4	0.750	6.000	3.85
	88.90	190.5	90.70	23.90	30.20	108.0	127.0		19.10	152.4	
3 1/2	4.000	8.500	4.070	0.940	1.250	4.810	5.500	8	0.750	7.000	4.81
	101.6	215.9	103.4	23.90	31.75	122.2	139.7		19.10	177.8	
4	4.500	9.000	4.570	0.940	1.310	5.310	6.190	8	0.750	7.500	5.30
	114.3	228.6	116.1	23.90	33.30	134.9	157.2		19.10	190.5	
5	5.563	10.00	5.660	0.940	1.440	6.440	7.310	8	0.880	8.500	6.07
	141.3	254.0	143.8	23.90	36.60	163.6	185.7		22.40	215.9	
6	6.625	11.00	6.720	1.000	1.560	7.560	8.500	8	0.880	9.500	7.45
	168.3	279.4	170.7	25.40	39.60	192.0	215.9		22.40	241.3	
8	8.625	13.50	8.720	1.120	1.750	9.690	10.62	8	0.880	11.75	12.1
	219.1	342.9	221.5	28.40	44.50	246.1	269.7		22.40	298.5	
10	10.75	16.00	10.88	1.190	1.940	12.00	12.75	12	1.000	14.25	16.5
	273.0	406.4	276.3	30.20	49.30	304.8	323.9		25.40	362.0	
12	12.75	19.00	12.88	1.250	2.190	14.38	15.00	12	1.000	17.00	26.2
	323.8	482.6	327.1	31.75	55.60	365.3	381.0		25.40	431.8	
14	14.00	21.00	14.14	1.380	2.250	15.75	16.25	12	1.120	18.75	34.6
	355.6	533.4	359.1	35.10	57.15	400.1	412.8		28.40	476.3	
16	16.00	23.50	16.16	1.440	2.500	18.00	18.50	16	1.120	21.25	44.8
	406.4	596.9	410.5	36.60	63.50	457.2	469.9		28.40	539.8	
18	18.00	25.00	18.18	1.560	2.690	19.88	21.00	16	1.250	22.75	48.9
	457.2	635.0	461.8	39.60	68.30	505.0	533.4		31.75	577.9	
20	20.00	27.50	20.20	1.690	2.880	22.00	23.00	20	1.250	25.00	61.9
	508.0	698.5	513.1	42.90	73.15	558.8	584.2		31.75	635.0	
24	24.00	32.00	24.25	1.880	3.250	26.12	27.25	20	1.380	29.50	86.9
	609.6	812.8	616.0	47.80	82.60	663.4	692.2		35.10	749.3	

### Notes

- Weights are based on manufacturer's data and are approximate.
- Flat face flanges may be provided at full thickness, C, or with raised face removed (the latter is nonstandard).
- For ring joint facings see page 8-6.
- For tolerances see page 8-4.