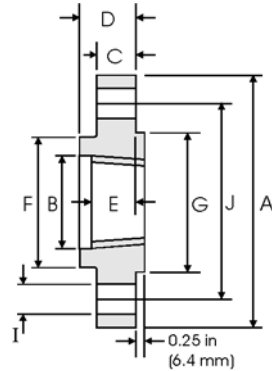


# Threaded Flanges - ANSI B16.5



## Class 2500 lb

Nominal Pipe Size	Pipe	Flange Data					Hub	Raised Face	Drilling Data			Weight
		A	B	C	D	E	F	G	H	I	J	
	Outside Diameter in mm	Overall Diameter in mm	Counter-bore min in mm	Flange Thickness min in mm	Overall Length in mm	Threaded length min in mm	Hub Diameter in mm	Face Diameter in mm	Number of Holes	Bolt Hole Diameter in mm	Diameter of Circle of Holes in mm	kg/ piece
1/2	0.840	5.250	0.930	1.190	1.560	1.120	1.690	1.380	4	0.880	3.500	2.95
	21.30	133.4	23.60	30.20	39.60	28.40	42.90	35.10		22.40	88.90	
3/4	1.050	5.500	1.140	1.250	1.690	1.250	2.000	1.690	4	0.880	3.750	3.44
	26.70	139.7	29.00	31.75	42.90	31.75	50.80	42.90		22.40	95.30	
1	1.315	6.250	1.410	1.380	1.880	1.380	2.250	2.000	4	1.000	4.250	4.82
	33.40	158.8	35.80	35.10	47.80	35.10	57.15	50.80		25.40	108.0	
1 1/4	1.660	7.250	1.750	1.500	2.060	1.500	2.880	2.500	4	1.120	5.120	7.14
	42.20	184.2	44.50	38.10	52.30	38.10	73.15	63.50		28.40	130.0	
1 1/2	1.900	8.000	1.990	1.750	2.380	1.750	3.120	2.880	4	1.250	5.750	10.0
	48.30	203.2	50.50	44.50	60.45	44.50	79.25	73.15		31.75	146.1	
2	2.375	9.250	2.500	2.000	2.750	2.000	3.750	3.620	8	1.120	6.750	14.8
	60.30	235.0	63.50	50.80	69.85	50.80	95.30	91.90		28.40	171.5	
2 1/2	2.875	10.50	3.000	2.250	3.120	2.250	4.500	4.120	8	1.250	7.750	21.5
	73.00	266.7	76.20	57.15	79.25	57.15	114.3	104.6		31.75	196.9	

### Notes

- The thread conforms to ASME B1.20.1 NTP threads as described in Section 10. (The only exceptions are small male and female plain face threaded flanges which use NPSL locknut threads.)
- Class 300 and higher threaded flanges are counter-bored. Threads are chamfered to the counterbore at an angle of 45° (approx).
- Weights are based on manufacturer's data and are approximate.
- For tolerances see page 8-4.