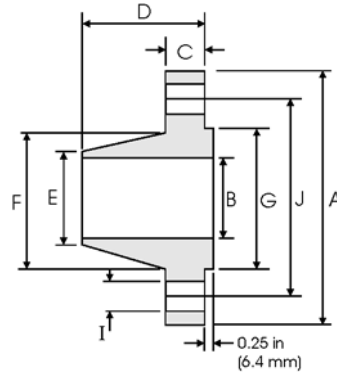




# Weld Neck Flanges - ANSI B16.5



## Class 2500 lb

Nominal Pipe Size	Pipe		Flange Data				Hub Data		Raised Face	Drilling Data			Weight
		<b>A</b>	<b>B</b>	<b>C</b>	<b>D</b>	<b>E</b>	<b>F</b>	<b>G</b>	<b>H</b>	<b>I</b>	<b>J</b>		
	Outside Diameter in mm	Overall Diameter in mm	Inside Diameter in mm	Flange Thickness min in mm	Overall Length in mm	Diameter at Weld Bevel in mm	Hub Diameter in mm	Face Diameter in mm	Number of Holes	Bolt Hole Diameter in mm	Diameter of Circle of Holes in mm	kg/ piece	
1/2	0.840	5.250	To be specified by Purchaser	1.190	2.880	0.840	1.690	1.380	4	0.880	3.500	3.12	
	21.30	133.4		30.20	73.15	21.30	42.90	35.00		22.40	88.90		
3/4	1.050	5.500		1.250	3.120	1.050	2.000	1.690	4	0.880	3.750	3.70	
	26.70	139.7		31.75	79.25	26.70	50.80	42.90		22.40	95.30		
1	1.315	6.250		1.380	3.500	1.320	2.250	2.000	4	1.000	4.250	5.24	
	33.40	158.8		35.10	88.90	33.50	57.15	50.80		25.40	108.0		
1 1/4	1.660	7.250		1.500	3.750	1.660	2.880	2.500	4	1.120	5.120	7.74	
	42.20	184.2		38.10	95.30	42.20	73.15	63.50		28.40	130.0		
1 1/2	1.900	8.000		1.750	4.380	1.900	3.120	2.880	4	1.250	5.750	10.9	
	48.30	203.2		44.50	111.3	48.30	79.25	73.15		31.75	146.1		
2	2.375	9.250		2.000	5.000	2.380	3.750	3.620	8	1.120	6.750	16.2	
	60.30	235.0		50.80	127.0	60.45	95.30	91.90		28.40	171.5		
2 1/2	2.875	10.50	2.250	5.620	2.880	4.500	4.120	8	1.250	7.750	23.7		
	73.00	266.7	57.15	142.7	73.15	114.3	104.6		31.75	196.9			
3	3.500	12.00	2.620	6.620	3.500	5.250	5.000	8	1.380	9.000	36.2		
	88.90	304.8	66.55	168.1	88.90	133.4	127.0		35.10	228.6			
4	4.500	14.00	3.000	7.500	4.500	6.500	6.190	8	1.620	10.75	55.3		
	114.3	355.6	76.20	190.5	114.3	165.1	157.2		41.10	273.1			
5	5.563	16.50	3.620	9.000	5.560	8.000	7.310	8	1.880	12.75	92.5		
	141.3	419.1	91.90	228.6	141.2	203.2	185.7		47.80	323.9			
6	6.625	19.00	4.250	10.75	6.630	9.250	8.500	8	2.120	14.50	143		
	168.3	482.6	108.0	273.1	168.4	235.0	215.9		53.80	368.3			
8	8.625	21.75	5.000	12.50	8.630	12.00	10.62	12	2.120	17.25	215		
	219.1	552.5	127.0	317.5	219.2	304.8	269.7		53.80	438.2			
10	10.75	26.50	6.500	16.50	10.75	14.75	12.75	12	2.620	21.25	406		
	273.0	673.1	165.1	419.1	273.0	374.7	323.8		66.55	539.8			
12	12.75	30.00	7.250	18.25	12.75	17.38	15.00	12	2.880	24.38	572		
	323.8	762.0	184.2	463.6	323.8	441.5	381.0		73.15	619.3			

### Notes

- Dimension B corresponds to the pipe inside diameter. Values quoted assume 40S/Standard wall thickness.
- Weights are based on manufacturer's data and are approximate.
- For ring joint facings see page 8-6. For weld end bevel see page 8-5.
- For tolerances see page 8-4.