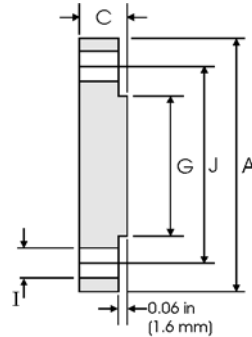
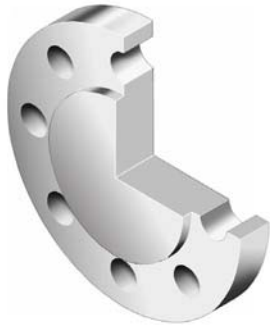


Blind Flanges - ANSI B16.5



Class 300 lb

Nominal Pipe Size	Pipe	Flange Data			Raised Face	Drilling Data		Weight
		A	C	G	H	I	J	
	Outside Diameter	Overall Diameter	Flange Thickness min	Face Diameter	Number of Holes	Bolt Hole Diameter	Diameter of Circle of Holes	kg/piece
in mm	in mm	in mm	in mm	in mm		in mm		
1/2	0.840	3.750	0.560	1.380	4	0.620	2.620	0.64
	21.30	95.20	14.20	35.10		15.70	66.55	
3/4	1.050	4.620	0.620	1.690	4	0.750	3.250	1.11
	26.70	117.3	15.70	42.90		19.00	82.50	
1	1.315	4.880	0.690	2.000	4	0.750	3.500	1.39
	33.40	123.9	17.50	50.80		19.00	88.90	
1 1/4	1.660	5.250	0.750	2.500	4	0.750	3.880	1.79
	42.20	133.3	19.00	63.50		19.00	98.50	
1 1/2	1.900	6.120	0.810	2.880	4	0.880	4.500	2.66
	48.30	155.4	20.60	73.15		22.3	114.3	
2	2.375	6.500	0.880	3.620	8	0.750	5.000	3.18
	60.30	165.1	22.30	91.90		19.10	127.0	
2 1/2	2.875	7.500	1.000	4.120	8	0.880	5.880	4.85
	73.00	190.5	25.40	104.6		22.30	1.493	
3	3.500	8.250	1.120	5.000	8	0.880	6.620	6.81
	88.90	209.5	28.40	127.0		22.30	168.1	
3 1/2	4.000	9.000	1.190	5.500	8	0.880	7.250	8.71
	101.6	228.6	30.20	139.7		22.30	184.1	
4	4.500	10.00	1.250	6.190	8	0.880	7.800	11.5
	114.3	254.0	31.70	157.2		22.30	200.1	
5	5.563	11.00	1.380	7.310	8	0.880	9.250	15.6
	141.3	279.4	35.00	185.7		22.30	234.9	
6	6.625	12.50	1.440	8.500	12	0.880	10.62	20.9
	168.3	317.5	36.50	215.9		22.30	269.7	
8	8.625	15.00	1.620	10.62	12	1.000	13.00	34.3
	219.1	381.0	41.10	269.7		25.40	330.2	
10	10.75	17.50	1.880	12.75	16	1.120	15.25	53.3
	273.0	444.5	47.70	323.9		28.40	387.3	
12	12.75	20.50	2.000	15.00	16	1.250	17.75	78.8
	323.8	520.7	50.80	381.0		31.70	450.8	
14	14.00	23.00	2.120	16.25	20	1.250	20.25	105
	355.6	584.2	53.80	412.8		31.70	514.3	
16	16.00	25.50	2.250	18.50	20	1.380	22.50	137
	406.4	647.7	57.15	469.9		35.00	571.5	
18	18.00	28.00	2.380	21.00	24	1.380	24.75	175
	457.2	711.2	60.45	533.4		35.00	628.6	
20	20.00	30.50	2.500	23.00	24	1.380	27.00	221
	508.0	774.7	63.50	584.2		35.00	685.8	
24	24.00	36.00	2.750	27.25	24	1.620	32.00	339
	609.6	914.4	69.85	692.2		41.10	812.8	

Notes

- Weights are based on manufacturer's data and are approximate.
- Flat face flanges may be provided at full thickness, C, or with raised face removed (the latter is nonstandard).
- For ring joint facings see page 8-6.
- For tolerances see page 8-4.