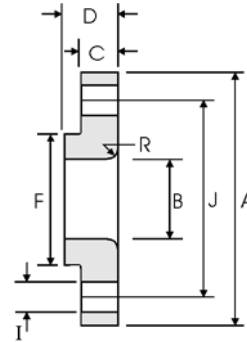


Lap Joint Flanges - ANSI B16.5



Class 300 lb

Nominal Pipe Size	Pipe	Flange Data					Lap	Hub	Drilling Data			Weight
		A	B	C	D	R	F	H	I	J		
	Outside Diameter	Overall Diameter	Inside Diameter	Flange Thickness min	Overall Length	Lap Radius	Hub Diameter	Number of Holes	Bolt Hole Diameter	Diameter of Circle of Holes	kg/ piece	
	in mm	in mm	in mm	in mm	in mm	in mm	in mm		in mm	in mm		
1/2	0.840	3.750	0.900	0.560	0.880	0.120	1.500	4	0.620	2.620	0.62	
	21.30	95.20	22.90	14.20	22.30	3.000	38.10		15.70	66.55		
3/4	1.050	4.620	1.110	0.620	1.000	0.120	1.880	4	0.750	3.250	1.10	
	26.70	117.3	28.20	15.70	25.40	3.000	47.70		19.00	82.50		
1	1.315	4.880	1.380	0.690	1.060	0.120	2.120	4	0.750	3.500	1.33	
	33.40	123.9	35.10	17.50	26.90	3.000	53.80		19.0	88.90		
1 1/4	1.660	5.250	1.720	0.750	1.060	0.190	2.500	4	0.750	3.880	1.65	
	42.20	133.3	43.70	19.00	26.90	4.800	63.50		19.00	98.50		
1 1/2	1.900	6.120	1.970	0.810	1.190	0.250	2.750	4	0.880	4.500	2.44	
	48.30	155.4	50.00	20.60	30.20	6.400	69.85		22.30	114.3		
2	2.375	6.500	2.460	0.880	1.310	0.310	3.310	8	0.750	5.000	2.83	
	60.30	165.1	62.50	22.30	33.20	7.900	84.00		19.10	127.0		
2 1/2	2.875	7.500	2.970	1.000	1.500	0.310	3.940	8	0.880	5.880	4.25	
	73.00	190.5	75.40	25.40	38.10	7.900	100.0		22.30	149.3		
3	3.500	8.250	3.600	1.120	1.690	0.380	4.620	8	0.880	6.620	5.78	
	88.90	209.5	91.40	28.40	42.90	9.700	117.3		22.30	168.1		
3 1/2	4.000	9.000	4.100	1.190	1.750	0.380	5.250	8	0.880	7.250	7.27	
	101.6	228.6	104.1	30.20	44.40	9.700	133.3		22.30	184.1		
4	4.500	10.00	4.600	1.250	1.880	0.440	5.750	8	0.880	7.880	9.55	
	114.3	254.0	116.8	31.70	47.70	11.20	146.0		22.30	200.1		
5	5.563	11.00	5.690	1.380	2.000	0.440	7.000	8	0.880	9.250	12.2	
	141.3	279.4	114.5	35.00	50.80	11.20	177.8		22.30	234.9		
6	6.625	12.50	6.750	1.440	2.060	0.500	8.120	12	0.880	10.62	15.5	
	168.3	317.5	171.5	36.50	52.30	12.70	206.2		22.30	269.7		
8	8.625	15.00	8.750	1.620	2.440	0.500	10.25	12	1.000	13.00	24.1	
	219.1	381.0	222.3	41.10	61.90	12.70	260.3		25.40	330.2		
10	10.75	17.50	10.92	1.880	3.750	0.500	12.62	16	1.120	15.25	34.4	
	273.0	444.5	277.4	47.70	95.20	12.70	320.5		28.40	387.3		
12	12.75	20.50	12.92	2.000	4.000	0.500	14.75	16	1.250	17.75	50.4	
	323.8	520.7	328.2	50.80	101.6	12.70	374.6		31.70	450.8		
14	14.00	23.00	14.18	2.120	4.380	0.500	16.75	20	1.250	20.25	70.9	
	355.6	584.2	360.2	53.80	111.2	12.70	425.4		31.70	514.3		
16	16.00	25.50	16.19	2.250	4.750	0.500	19.00	20	1.380	22.50	89.5	
	406.4	647.7	411.2	57.15	120.6	12.70	482.6		35.00	571.5		
18	18.00	28.00	18.20	2.380	5.120	0.500	21.00	24	1.380	24.75	111	
	457.2	711.2	462.3	60.45	130.0	12.70	533.4		35.00	628.6		
20	20.00	30.50	20.25	2.500	5.500	0.500	23.12	24	1.380	27.00	137	
	508.0	774.7	514.4	63.50	139.7	12.70	587.2		35.0	685.8		
24	24.00	36.00	24.25	2.750	6.000	0.500	27.62	24	1.620	32.00	204	
	609.6	914.4	616.0	69.8	152.4	12.70	701.5		41.10	812.8		

Notes

- Weights are based on manufacturer's data and are approximate.
- For tolerances see page 8-4.