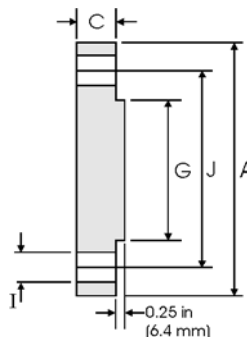
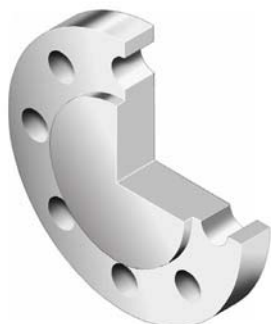


Blind Flanges - ANSI B16.5



Class 600 lb

Nominal Pipe Size	Pipe	Flange Data			Raised Face	Drilling Data		Weight
		A	C	G	H	I	J	
	Outside Diameter	Overall Diameter	Flange Thickness min	Face Diameter	Number of Holes	Bolt Hole Diameter	Diameter of Circle of Holes	kg/piece
	in mm	in mm	in mm	in mm		in mm	in mm	
1/2	0.840	3.750	0.560	1.380	4	0.620	2.620	0.76
	21.30	95.20	14.20	35.10		15.70	66.55	
3/4	1.050	4.620	0.620	1.690	4	0.750	3.250	1.28
	26.70	117.3	15.70	42.90		19.10	82.60	
1	1.315	4.880	0.690	2.000	4	0.750	3.500	1.60
	33.40	123.9	17.50	50.80		19.10	88.90	
1 1/4	1.660	5.250	0.810	2.500	4	0.750	3.880	2.23
	42.20	133.3	20.60	63.50		19.10	98.60	
1 1/2	1.900	6.120	0.880	2.880	4	0.880	4.500	3.25
	48.30	155.4	22.30	73.15		22.40	114.3	
2	2.375	6.500	1.000	3.620	8	0.750	5.000	4.15
	60.30	165.1	25.40	91.90		19.10	127.0	
2 1/2	2.875	7.500	1.120	4.120	8	0.880	5.880	6.13
	73.00	190.5	28.40	104.6		22.40	149.4	
3	3.500	8.250	1.250	5.000	8	0.880	6.620	8.44
	88.90	209.5	31.70	127.0		22.40	168.1	
3 1/2	4.000	9.000	1.380	5.500	8	1.000	7.250	11.0
	101.6	228.6	35.00	139.7		25.40	184.2	
4	4.500	10.75	1.500	6.190	8	1.000	8.500	17.3
	114.3	273.1	38.10	157.2		25.40	215.9	
5	5.563	13.00	1.750	7.310	8	1.120	10.50	29.4
	141.3	330.2	44.50	185.7		28.40	266.7	
6	6.625	14.00	1.880	8.500	12	1.120	11.50	36.1
	168.3	355.6	47.80	215.9		28.40	292.1	
8	8.625	16.50	2.190	10.62	12	1.250	13.75	58.9
	219.1	419.1	55.60	269.7		31.75	349.3	
10	10.75	20.00	2.500	12.75	16	1.380	17.00	97.5
	273.0	508.0	63.50	323.9		35.10	431.8	
12	12.75	22.00	2.620	15.00	20	1.380	19.25	124
	323.8	558.8	66.55	381.0		35.10	489.0	
14	14.00	23.75	2.750	16.25	20	1.500	20.75	151
	355.6	603.3	69.85	412.8		38.10	527.1	
16	16.00	27.00	3.000	18.50	20	1.620	23.75	214
	406.4	685.8	76.20	469.9		41.10	603.3	
18	18.00	29.25	3.250	21.00	20	1.750	25.75	272
	457.2	743.0	82.60	533.4		44.50	654.1	
20	20.00	32.00	3.500	23.00	24	1.750	28.50	349
	508.0	812.8	88.90	584.2		44.50	723.9	
24	24.00	37.00	4.000	27.25	24	2.000	33.00	533
	609.6	939.8	101.6	692.2		50.80	838.2	

Notes

- Weights are based on manufacturer's data and are approximate.
- For ring joint facings see page 8-6.
- For tolerances see page 8-4.