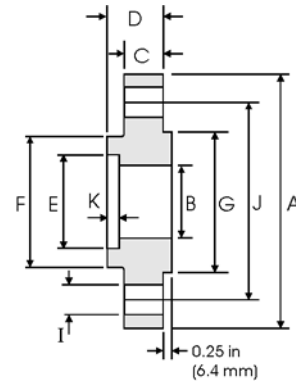


Socket Welding Flanges - ANSI B16.5



Class 600 lb

Pipe		Flange						Hub	Raised Face	Drilling Data			Weight
Nominal Pipe Size		A	B	C	D	E	K	F	G	H	I	J	
	Outside Diameter	Overall Diameter	Inside Diameter	Flange Thickness min	Overall Length	Socket Diameter	Depth of Socket	Hub Diameter	Face Diameter	No. of Holes	Bolt Hole Diameter	Diameter of Circle of Holes	kg/ piece
	in mm	in mm	in mm	in mm	in mm	in mm	in mm	in mm	in mm	in mm	in mm	in mm	in mm
1/2	0.840	3.750	To be specified by the Purchaser	0.560	0.880	0.880	0.380	1.500	1.380	4	0.620	2.620	0.76
	21.30	95.20		14.20	22.30	22.40	9.600	38.10	35.10		15.70	66.55	
3/4	1.050	4.620		0.620	1.000	1.090	0.440	1.880	1.690	4	0.750	3.250	1.29
	26.70	117.3		15.70	25.40	27.70	11.10	47.70	42.90		19.10	82.50	
1	1.315	4.880		0.690	1.060	1.360	0.500	2.120	2.000	4	0.750	3.500	1.55
	33.40	123.9		17.50	26.90	34.50	12.70	53.80	50.80		19.10	88.90	
1 1/4	1.660	5.250		0.810	1.120	1.700	0.560	2.500	2.500	4	0.750	3.880	2.06
	42.20	133.3		20.60	28.40	43.20	14.20	63.50	63.50		19.10	98.60	
1 1/2	1.900	6.120		0.880	1.250	1.950	0.620	2.750	2.880	4	0.880	4.500	3.00
	48.30	155.4		22.30	31.75	49.50	15.70	69.85	73.15		22.30	114.3	
2	2.375	6.500		1.000	1.440	2.440	0.690	3.310	3.620	8	0.750	5.000	3.67
	60.30	165.1		25.40	36.60	62.00	17.50	84.00	91.90		19.10	127.0	
2 1/2	2.875	7.500	1.120	1.620	2.940	0.750	3.940	4.120	8	0.880	5.880	5.35	
	73.00	190.5	28.40	41.10	74.70	19.00	100.0	104.6		22.30	149.3		
3	3.500	8.250	1.250	1.810	3.570	0.810	4.620	5.000	8	0.880	6.620	7.06	
	88.90	209.5	31.75	46.00	90.70	20.60	117.3	127.0		22.30	168.1		

Class 1500 lb

Pipe		Flange						Hub	Raised Face	Drilling Data			Weight
Nominal Pipe Size		A	B	C	D	E	K	F	G	H	I	J	
	Outside Diameter	Overall Diameter	Inside Diameter	Flange Thickness min	Overall Length	Socket Diameter	Depth of Socket	Hub Diameter	Face Diameter	No. of Holes	Bolt Hole Diameter	Diameter of Circle of Holes	kg/ piece
	in mm	in mm	in mm	in mm	in mm	in mm	in mm	in mm	in mm	in mm	in mm	in mm	in mm
1/2	0.840	4.750	To be specified by the Purchaser	0.880	1.250	0.880	0.380	1.500	1.380	4	0.880	3.250	1.80
	21.30	120.6		22.30	31.70	22.40	9.600	38.10	35.10		22.30	82.50	
3/4	1.050	5.120		1.000	1.380	1.090	0.440	1.750	1.690	4	0.880	3.500	2.41
	26.70	130.0		25.40	35.00	27.70	11.10	44.40	42.90		22.30	88.90	
1	1.315	5.880		1.120	1.620	1.360	0.500	2.060	2.000	4	1.000	4.000	3.55
	33.40	149.3		28.40	41.10	34.50	12.70	52.30	50.80		25.40	101.6	
1 1/4	1.660	6.250		1.120	1.620	1.700	0.560	2.500	2.500	4	1.000	4.380	4.02
	42.20	158.7		28.40	41.10	43.20	14.20	63.50	63.50		25.40	111.2	
1 1/2	1.900	7.000		1.250	1.750	1.950	0.620	2.750	2.880	4	1.120	4.880	5.45
	48.30	177.8		31.75	44.50	49.50	15.70	69.85	73.15		28.40	123.9	
2	2.375	8.500		1.500	2.250	2.440	0.690	3.310	3.620	8	1.000	6.500	10.2
	60.30	215.9		38.10	57.15	62.00	17.50	84.00	91.90		25.40	165.1	
2 1/2	2.875	9.620	1.620	2.500	2.940	0.750	3.940	4.120	8	1.120	7.500	13.9	
	73.00	244.3	41.10	63.50	74.70	19.00	100.0	104.6		28.40	190.5		

Notes

- Class 400 socket weld flanges may be provided in NPS 1/2 to 2 1/2 using Class 600 dimensions
- Dimension B corresponds to the pipe inside diameter. Values quoted assume 40S/Standard wall thickness.
- Weights are based on manufacturer's data and are approximate.
- For ring joint facings see page 8-6. For tolerances see page 8-4.

To order Call: +86-571-28938368 Fax: +86-571-87922182 Email: info@zmcsteel.com