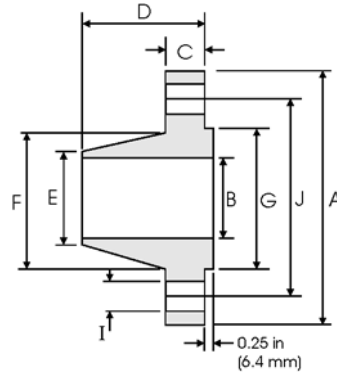


Weld Neck Flanges - ANSI B16.5



Class 90 lb

Nominal Pipe Size	Pipe		Flange Data				Hub Data		Raised Face	Drilling Data			Weight
	Outside Diameter	Overall Diameter	Inside Diameter	Flange Thickness min	Overall Length	Diameter at Weld Bevel	Hub Diameter	Face Diameter	Number of Holes	Bolt Hole Diameter	Diameter of Circle of Holes	kg/ piece	
in mm	in mm	in mm	in mm	in mm	in mm	in mm	in mm	in mm		in mm	in mm		
1/2	0.840	4.750	To be specified by Purchaser	0.880	2.380	0.840	1.500	1.380	4	0.880	3.250	1.87	
	21.30	120.6		22.30	60.45	21.30	38.10	35.00		22.30	82.50		
3/4	1.050	5.120		1.000	2.750	1.050	1.750	1.690	4	0.880	3.500	2.56	
	26.70	130.0		25.40	69.85	26.70	44.00	42.90		22.30	88.90		
1	1.315	5.880		1.120	2.880	1.320	2.060	2.000	4	1.000	4.000	3.74	
	33.40	149.3		28.40	73.15	33.50	52.30	50.80		25.40	101.6		
1 1/4	1.660	6.250		1.120	2.880	1.660	2.500	2.500	4	1.000	4.380	4.33	
	42.20	158.7		28.40	73.15	42.20	63.50	63.50		25.40	111.2		
1 1/2	1.900	7.000		1.250	3.250	1.900	2.750	2.880	4	1.120	4.880	5.94	
	48.30	177.8		31.70	82.50	48.30	69.85	73.15		28.40	123.9		
2	2.375	8.500		1.500	4.000	2.380	4.120	3.620	8	1.000	6.500	10.8	
	60.30	215.9		38.10	101.6	60.45	104.6	91.90		25.40	165.1		
2 1/2	2.875	9.620		1.620	4.120	2.880	4.880	4.120	8	1.120	7.500	15.0	
	73.00	244.3		41.10	104.6	73.15	123.9	104.6		28.40	190.5		
3	3.500	9.500		1.500	4.000	3.500	5.000	5.000	8	1.000	7.500	13.7	
	88.90	241.3		38.10	101.6	88.90	127.0	127.0		25.40	190.5		
4	4.500	11.50		1.750	4.500	4.500	6.250	6.190	8	1.250	9.250	22.5	
	114.3	292.1		44.40	114.3	114.3	158.7	157.2		31.70	234.9		
5	5.563	13.75		2.000	5.000	5.560	7.500	7.310	8	1.380	11.00	37.4	
	141.3	349.2		50.80	127.0	141.2	190.5	185.7		35.00	279.4		
6	6.625	15.00	2.190	5.500	6.630	9.250	8.500	12	1.250	12.50	47.7		
	168.3	381.0	55.60	139.7	168.4	234.9	215.9		31.70	317.5			
8	8.625	18.50	2.500	6.380	8.630	11.75	10.62	12	1.500	15.50	81.3		
	219.1	469.9	63.50	162.0	219.2	298.4	269.7		38.10	393.7			
10	10.75	21.50	2.750	7.250	10.75	14.50	12.75	16	1.500	18.50	119		
	273.0	546.1	69.85	184.1	273.0	368.3	323.8		38.10	469.9			
12	12.75	24.00	3.120	7.880	12.75	16.50	15.00	20	1.500	21.00	157		
	323.8	609.6	79.25	200.1	323.8	419.1	381.0		38.10	533.4			
14	14.00	25.25	3.380	8.380	14.00	17.75	16.25	20	1.620	22.00	180		
	355.6	641.3	85.80	212.8	355.6	450.8	412.7		41.10	558.8			
16	16.00	27.75	3.500	8.500	16.00	20.00	18.50	20	1.750	24.25	217		
	406.4	704.8	88.90	215.9	406.4	508.0	469.9		44.40	615.9			
18	18.00	31.00	4.000	9.000	18.00	22.25	21.00	20	2.000	27.00	292		
	457.2	787.4	101.6	228.6	457.2	565.1	533.4		50.80	685.8			
20	20.00	33.75	4.250	9.750	20.00	24.50	23.00	20	2.120	29.50	362		
	508.0	857.2	107.9	247.6	508.0	622.3	584.2		53.80	749.3			
24	24.00	41.00	5.500	11.50	24.00	29.50	27.25	20	2.620	35.50	665		
	609.6	1041.4	139.7	292.1	609.6	749.3	692.1		66.55	901.7			

Notes

- Dimension B corresponds to the pipe inside diameter. Values quoted assume 40S/Standard wall thickness.
- Weights are based on manufacturer's data and are approximate.
- For ring joint facings see page 8-6. For weld end bevel see page 8-5.
- For tolerances see page 8-4.

To order Call: +86-571-28938368 Fax: +86-571-87922182 Email: info@zmcsteel.com